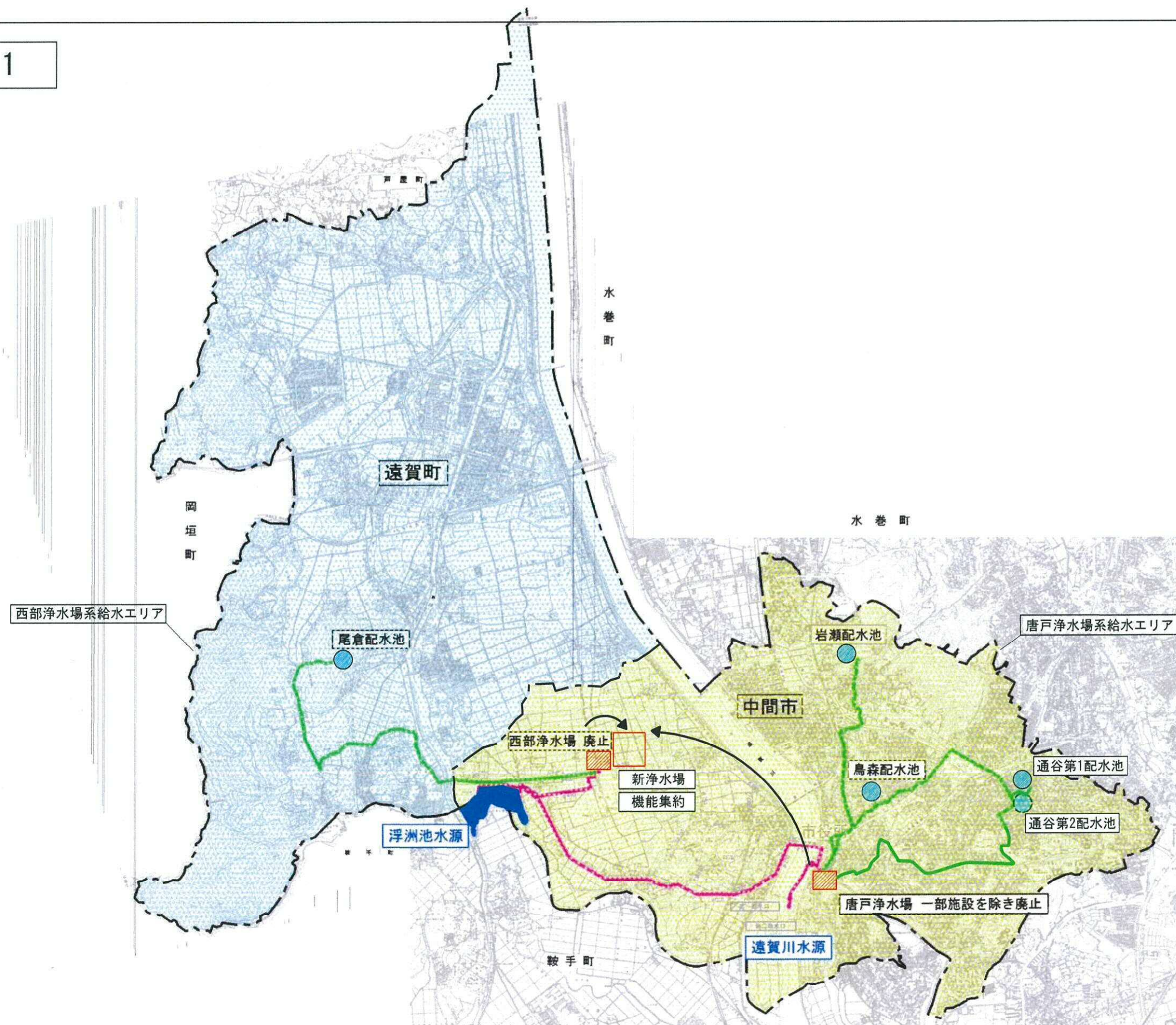






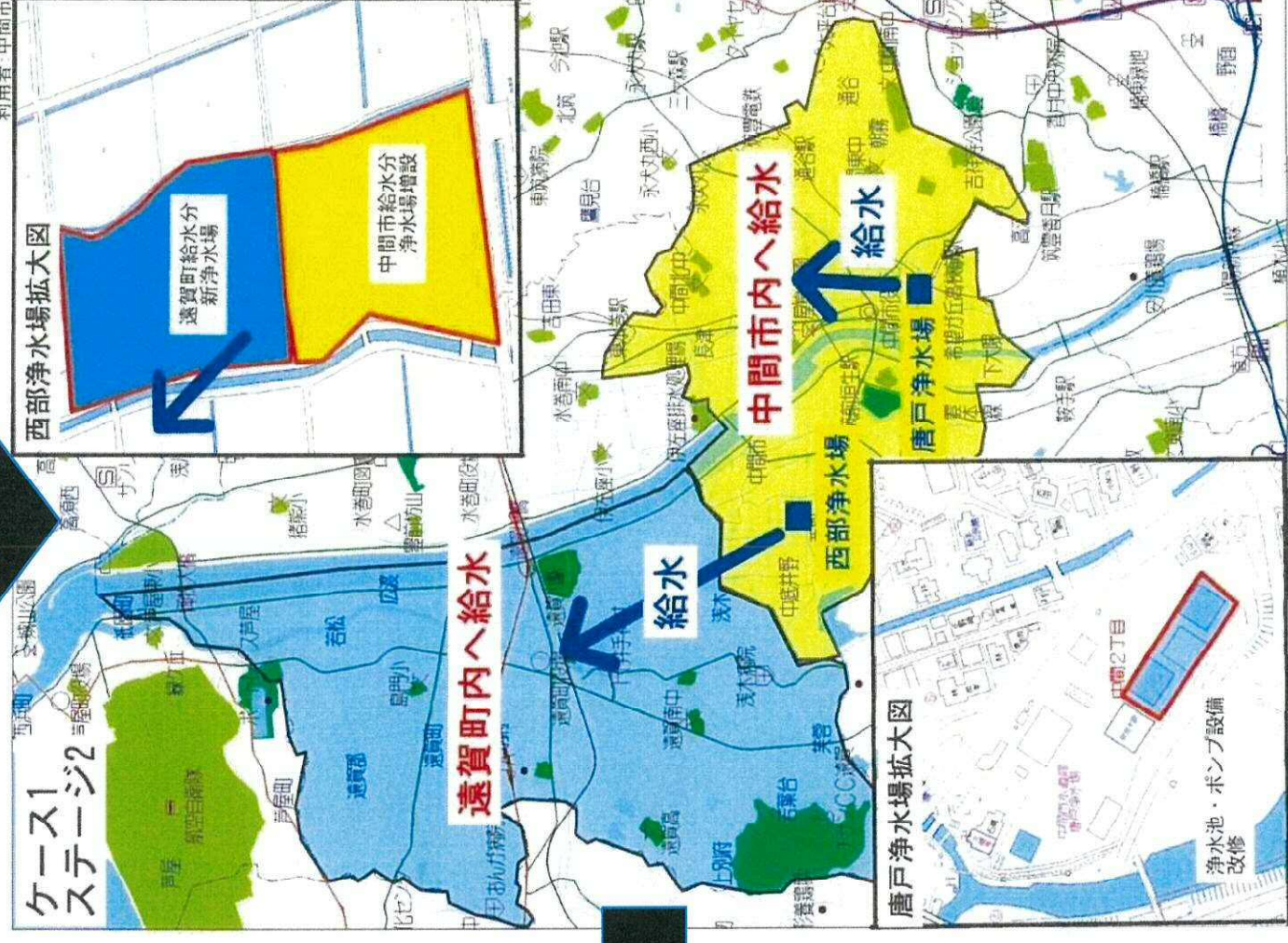
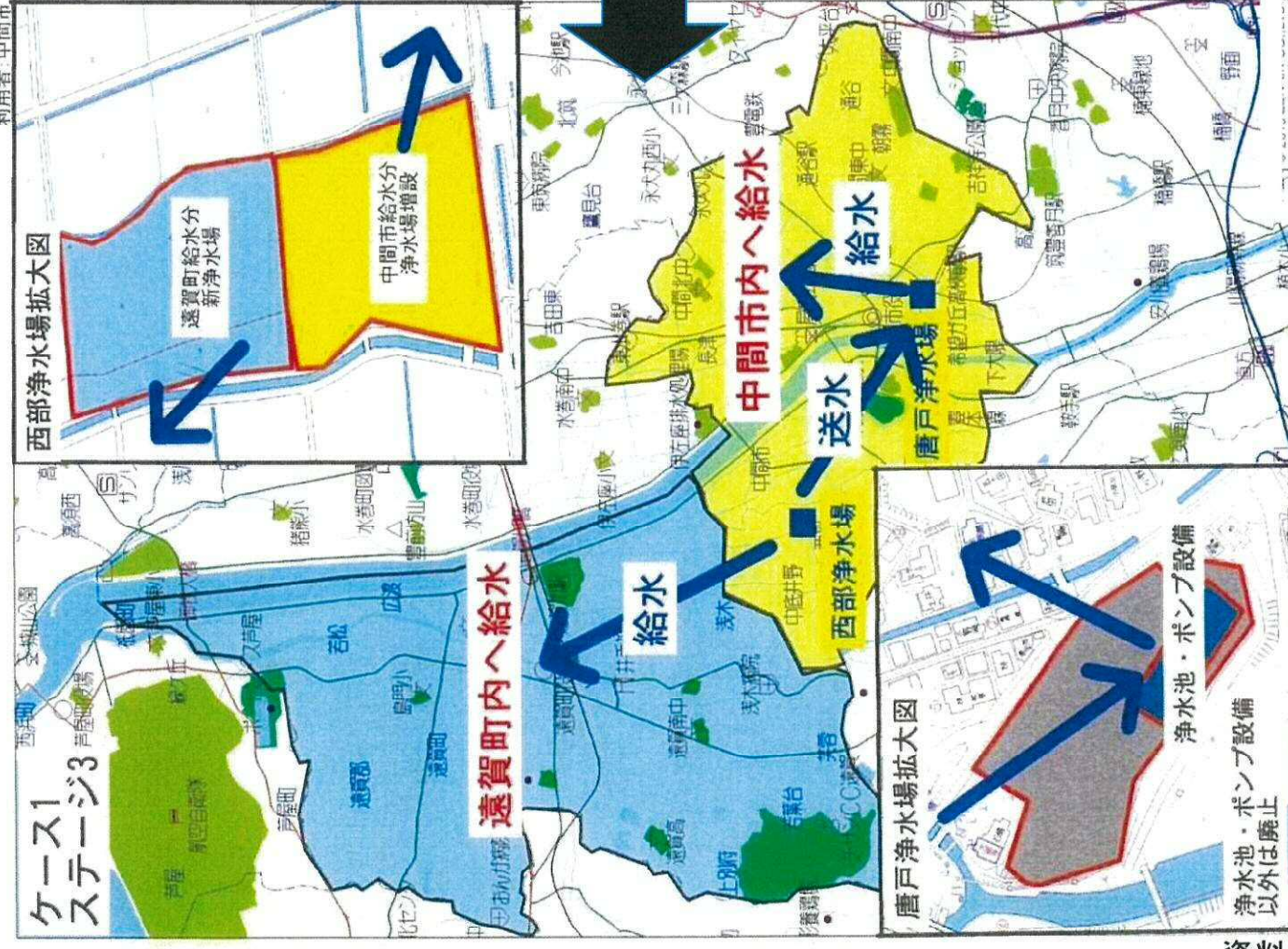
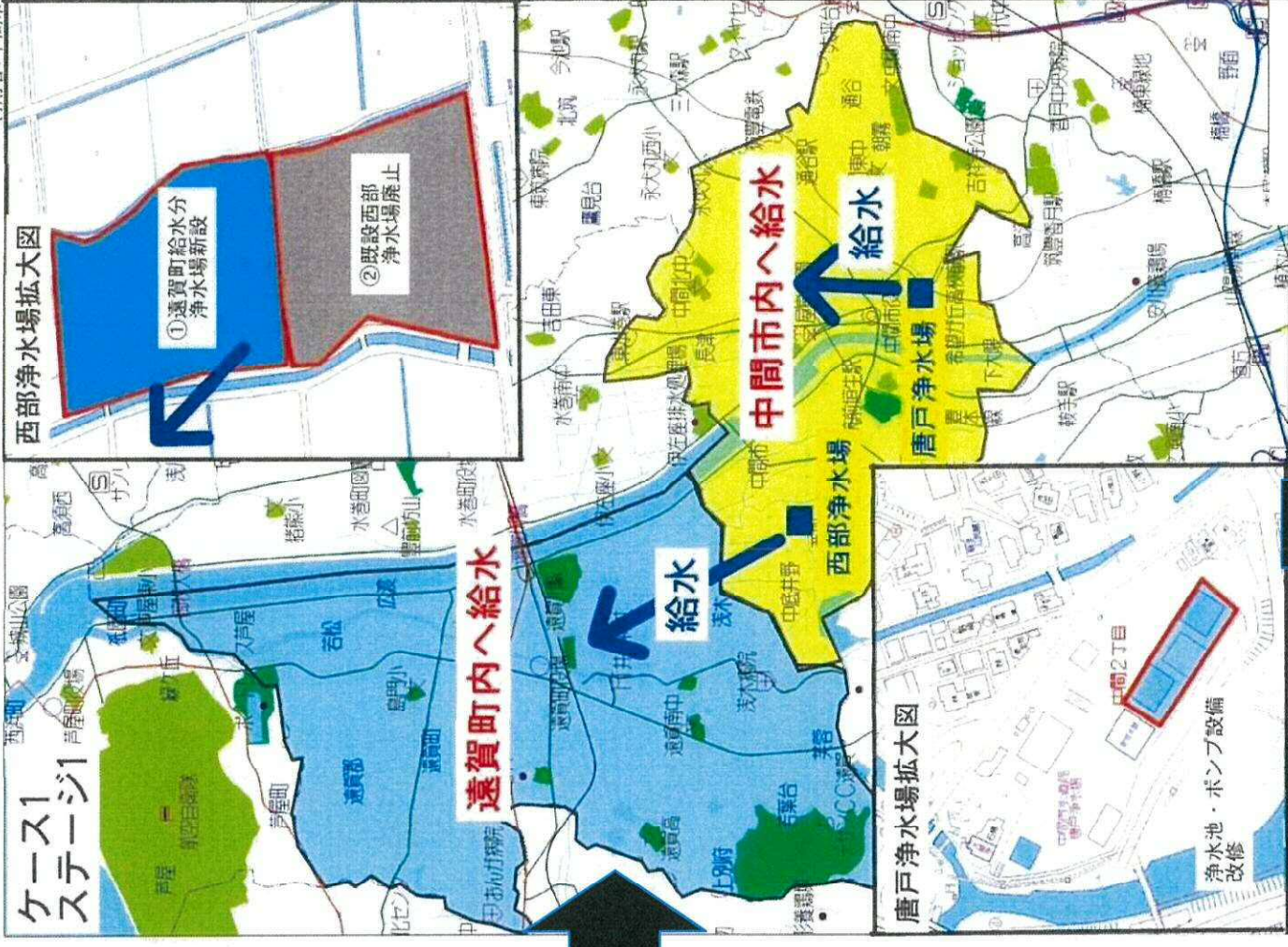
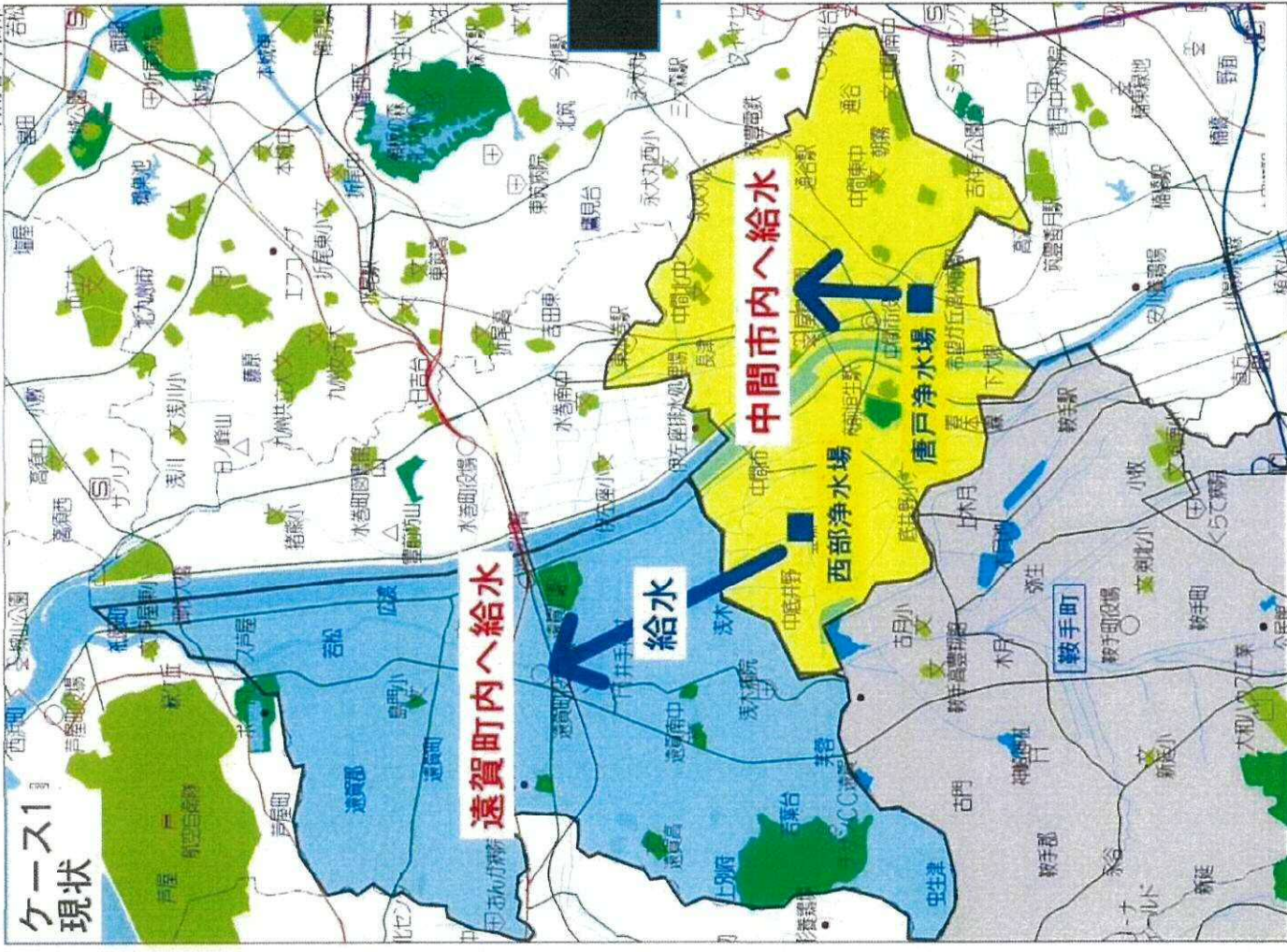
# 中間市水道事業あり方検討委員会

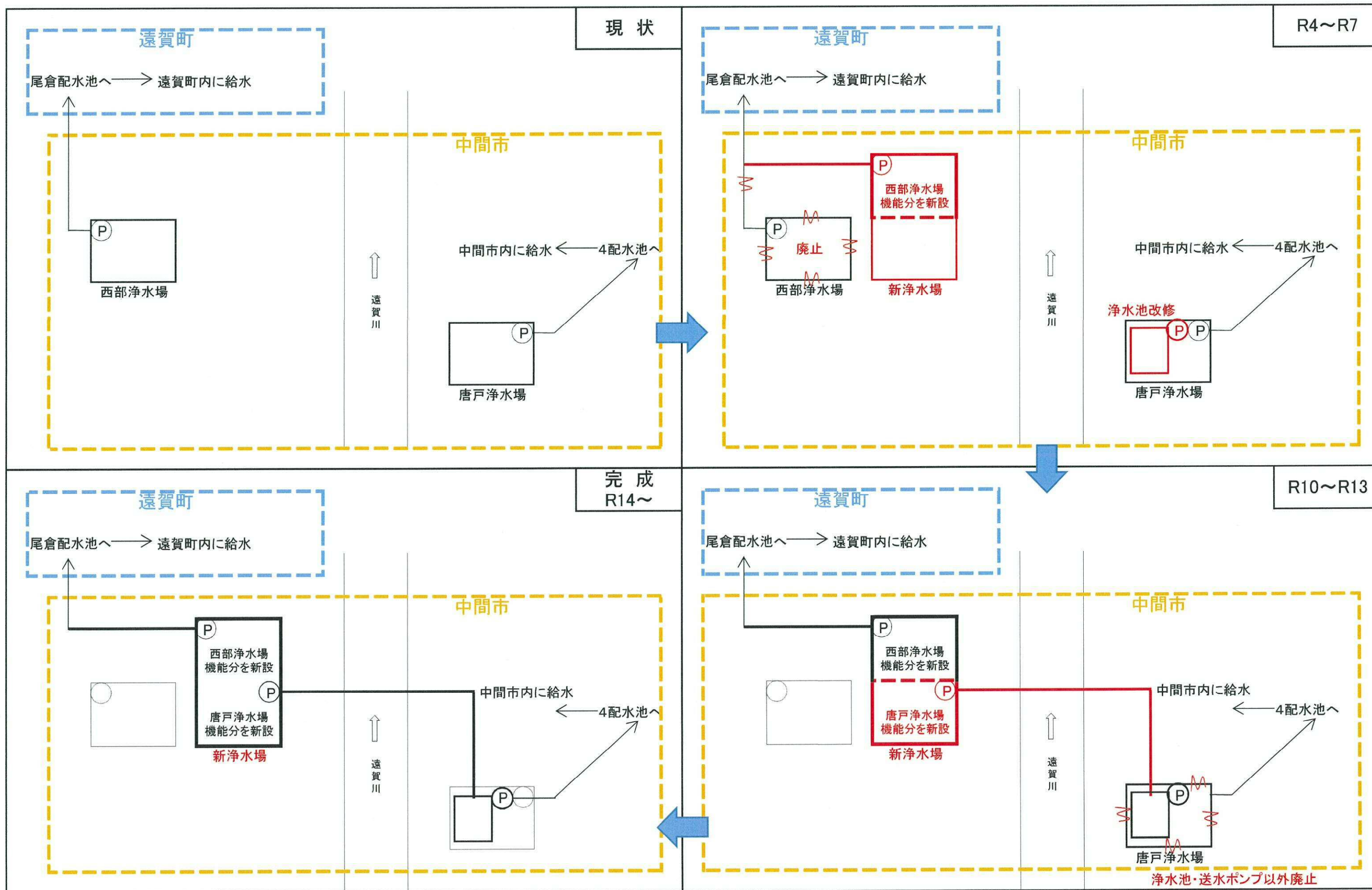
## 第1回 資料編 図集

Case. 1

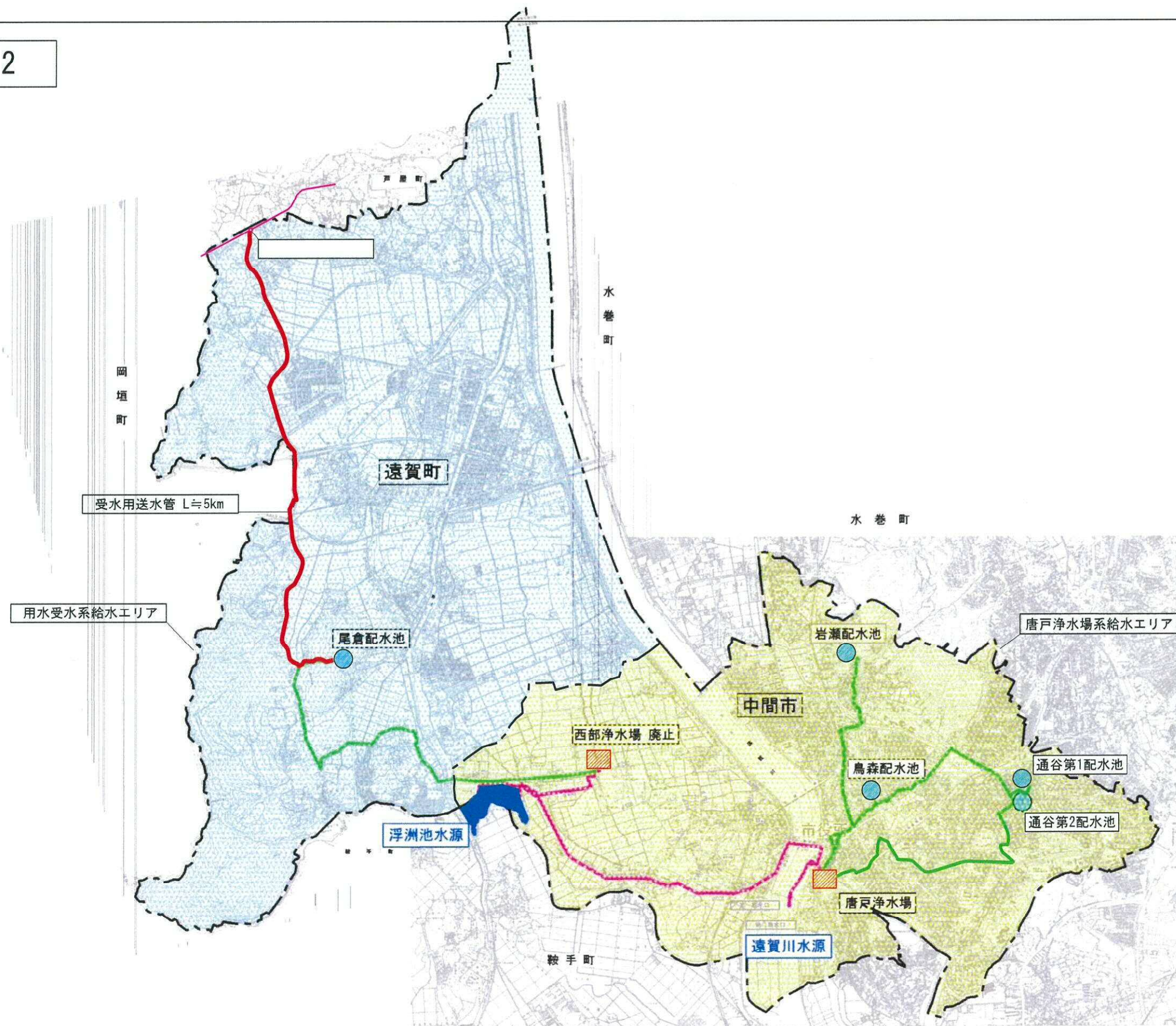


凡 例	
	浄水場
	配水池
	導水管 (φ250~φ400 1/2)
	送水管 (φ250~φ500 1/2)



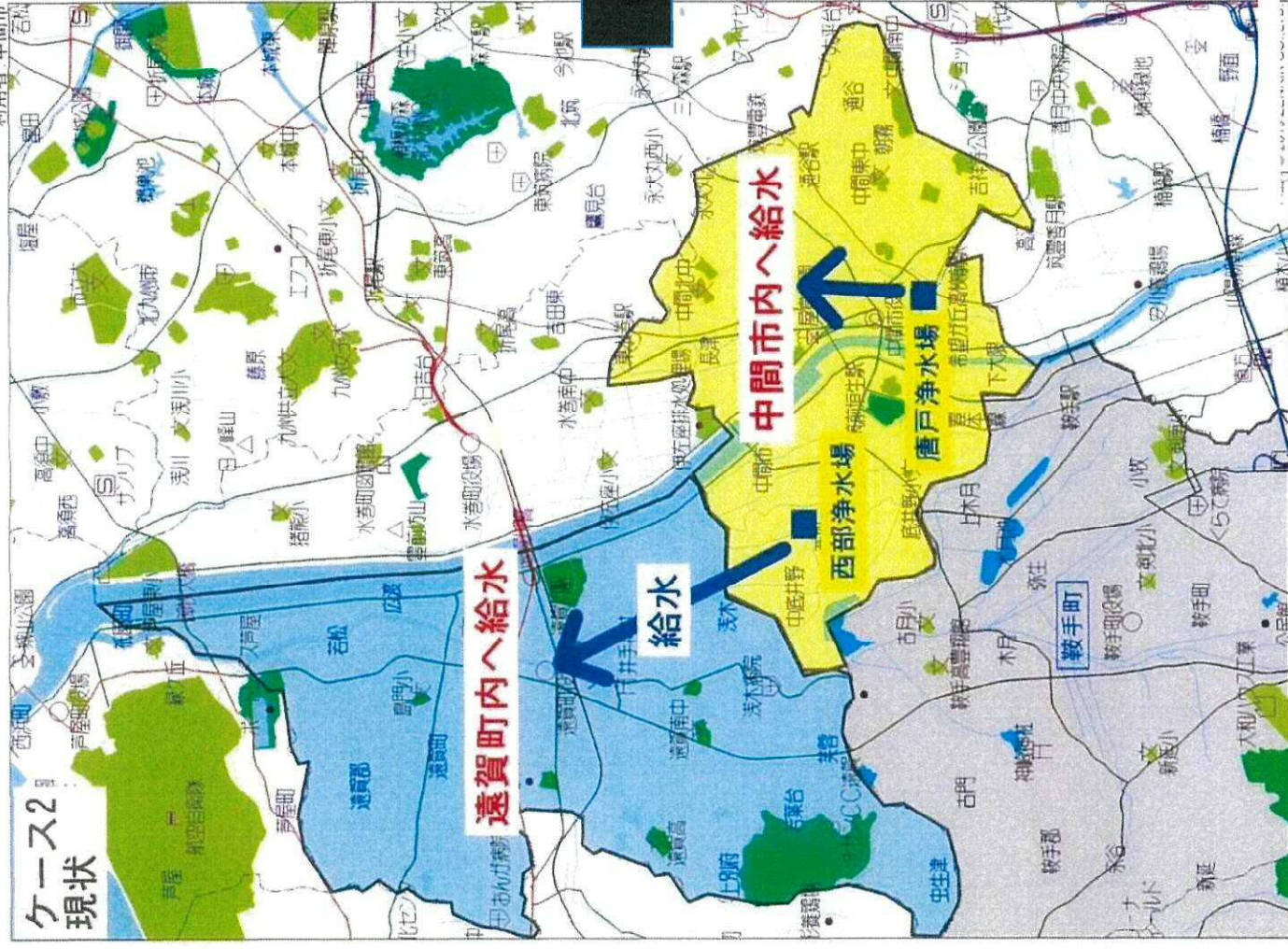


Case. 2



凡 例	
	浄水場
	配水池
	導水管 (φ250~φ400 /φ)
	送水管 (φ250~φ500 /φ)

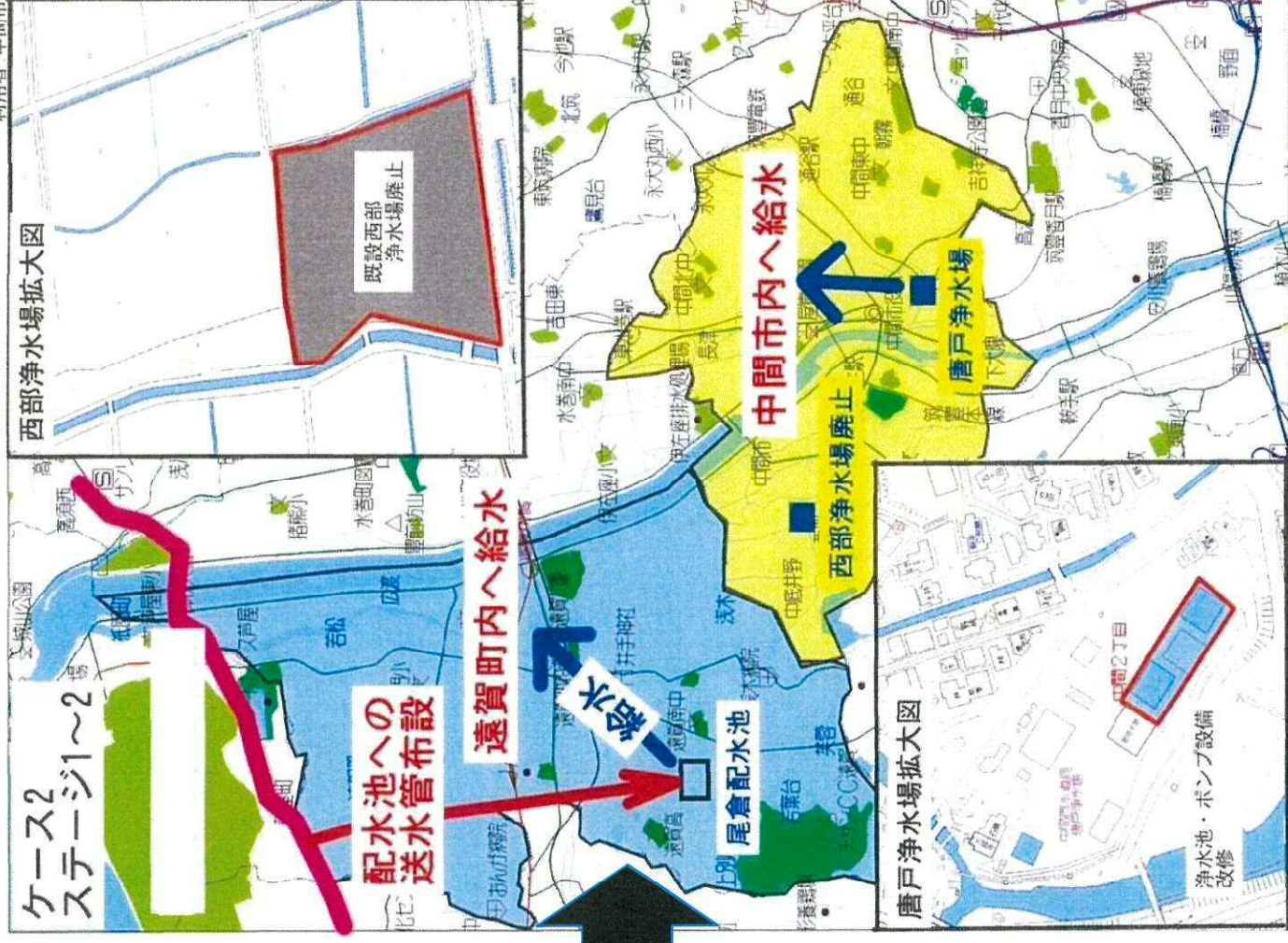
### ケース2 現状



住宅地区の収録範囲外です

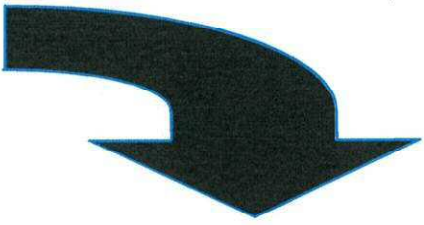
縮尺 1 / 50,000

### ケース2 ステージ1~2

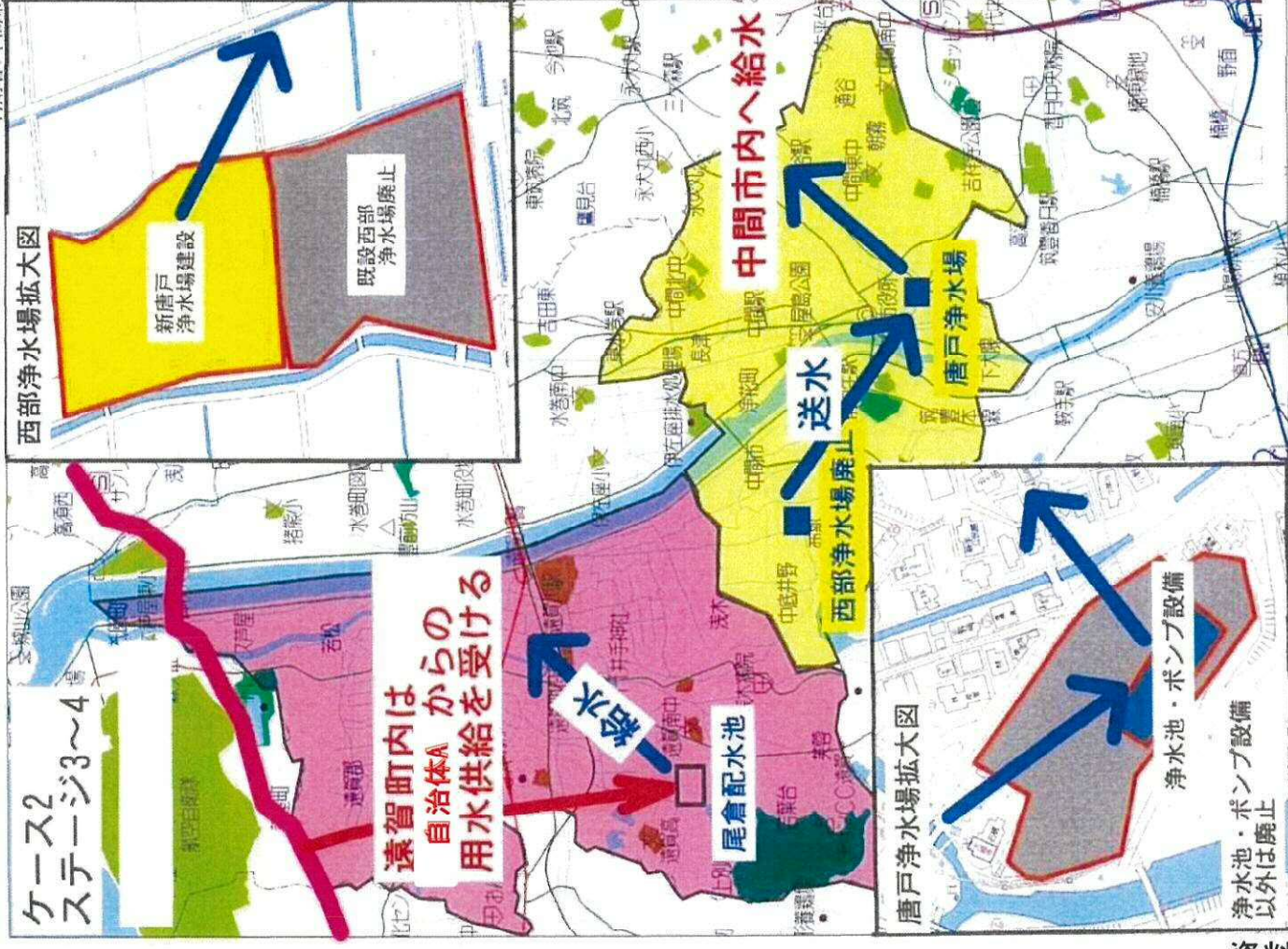


住宅地区の収録範囲外です

縮尺 1 / 50,000

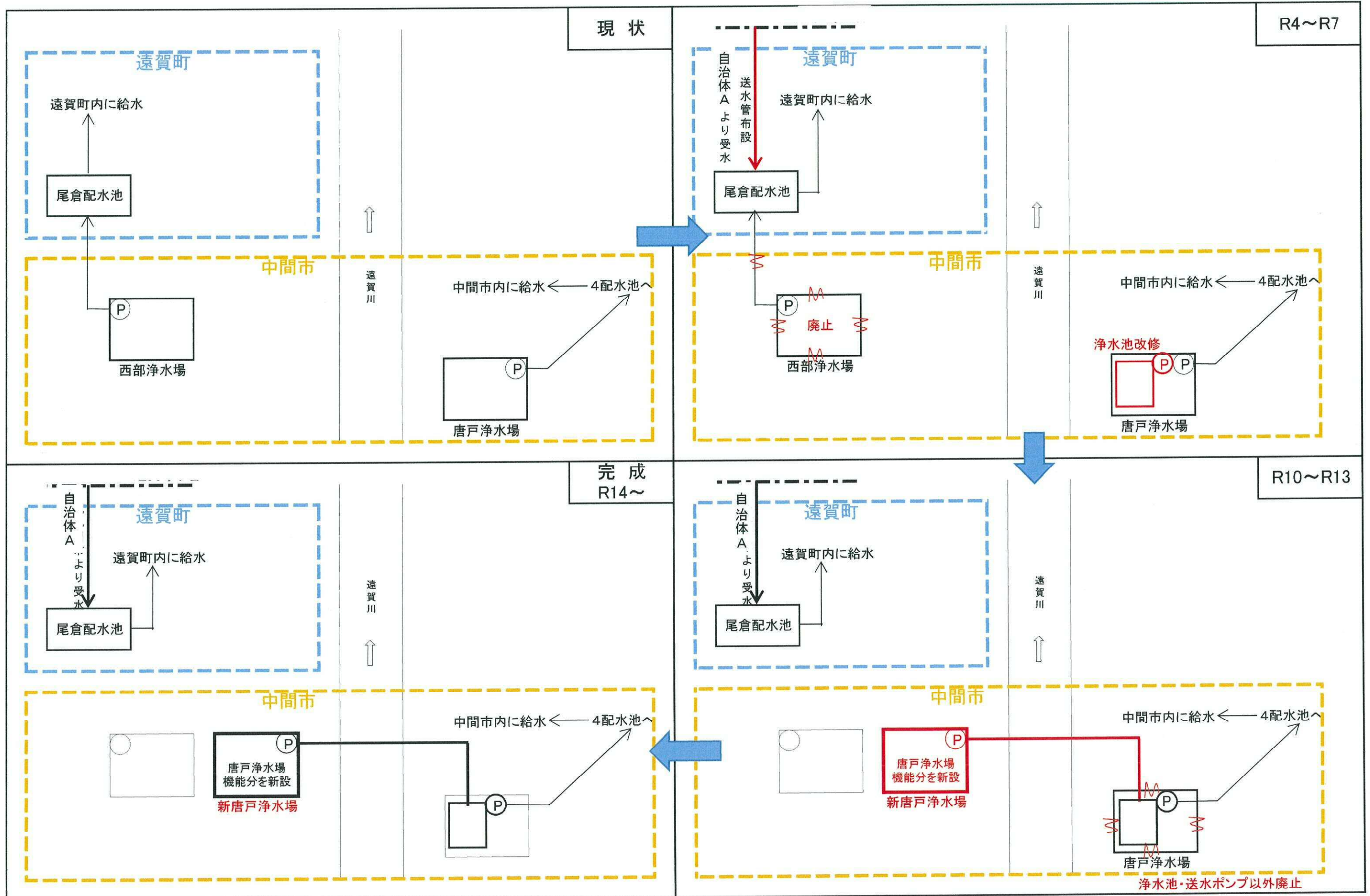


### ケース2 ステージ3~4

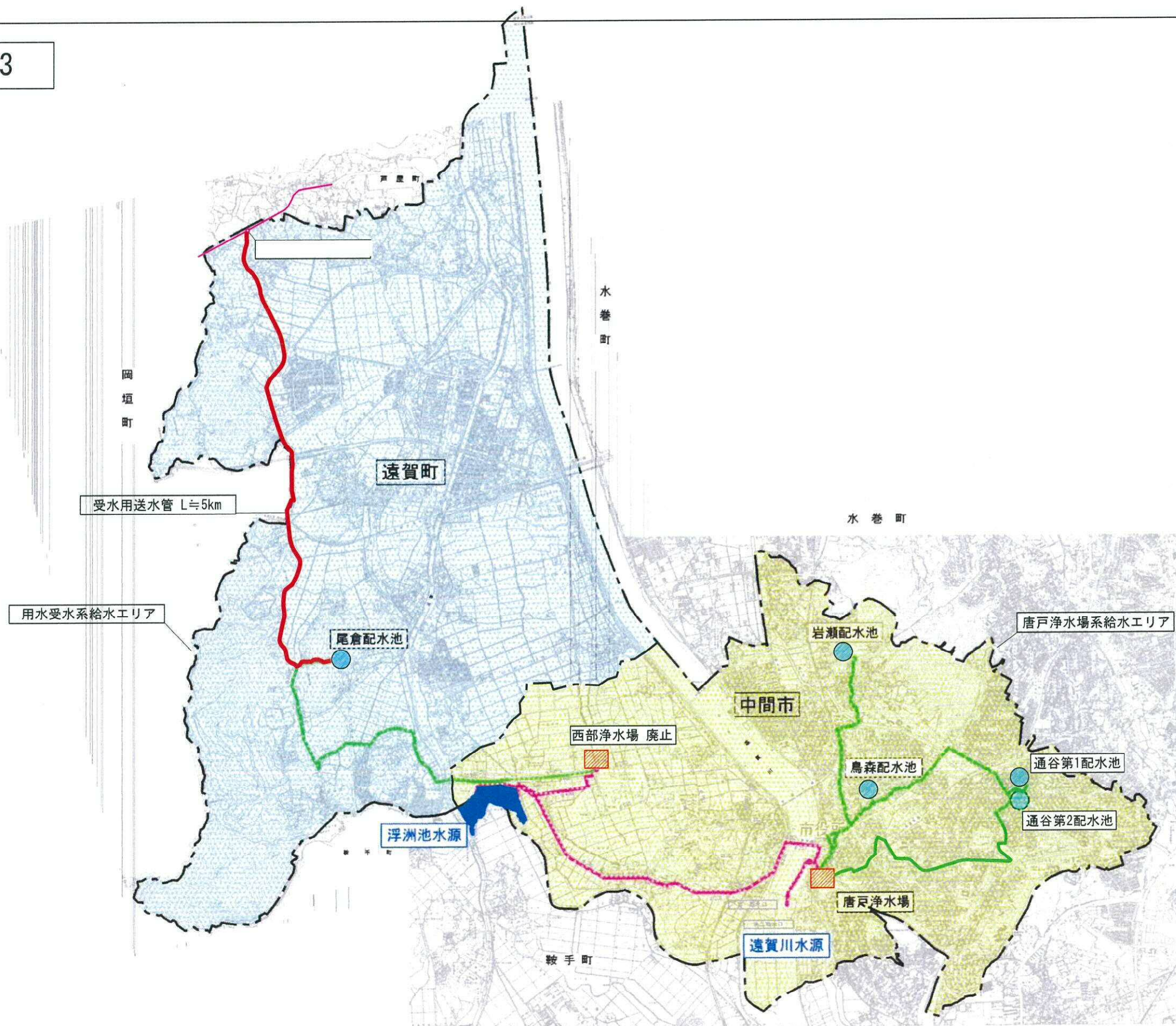






住宅地区の収録範囲外です

縮尺 1 / 50,000

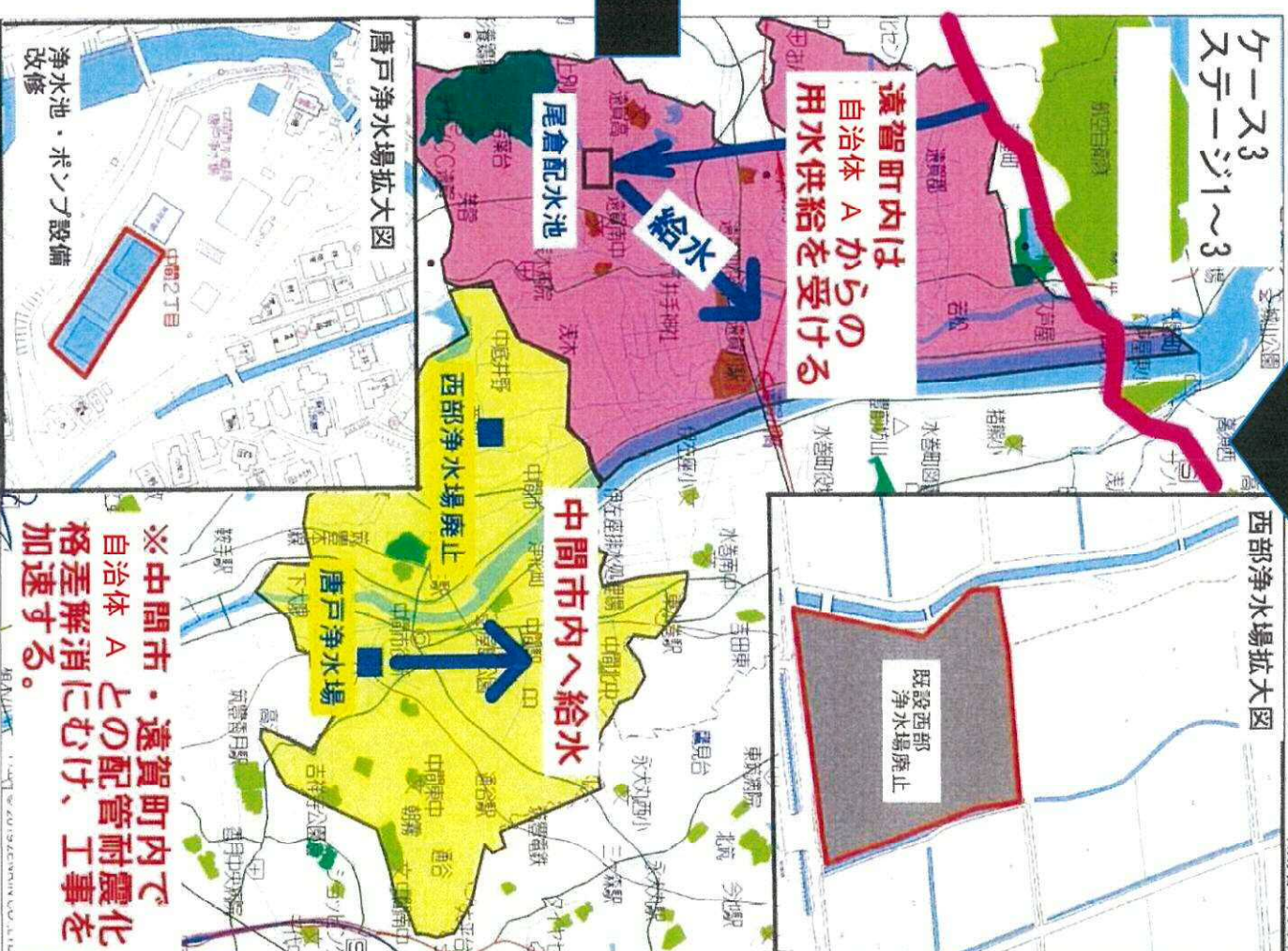
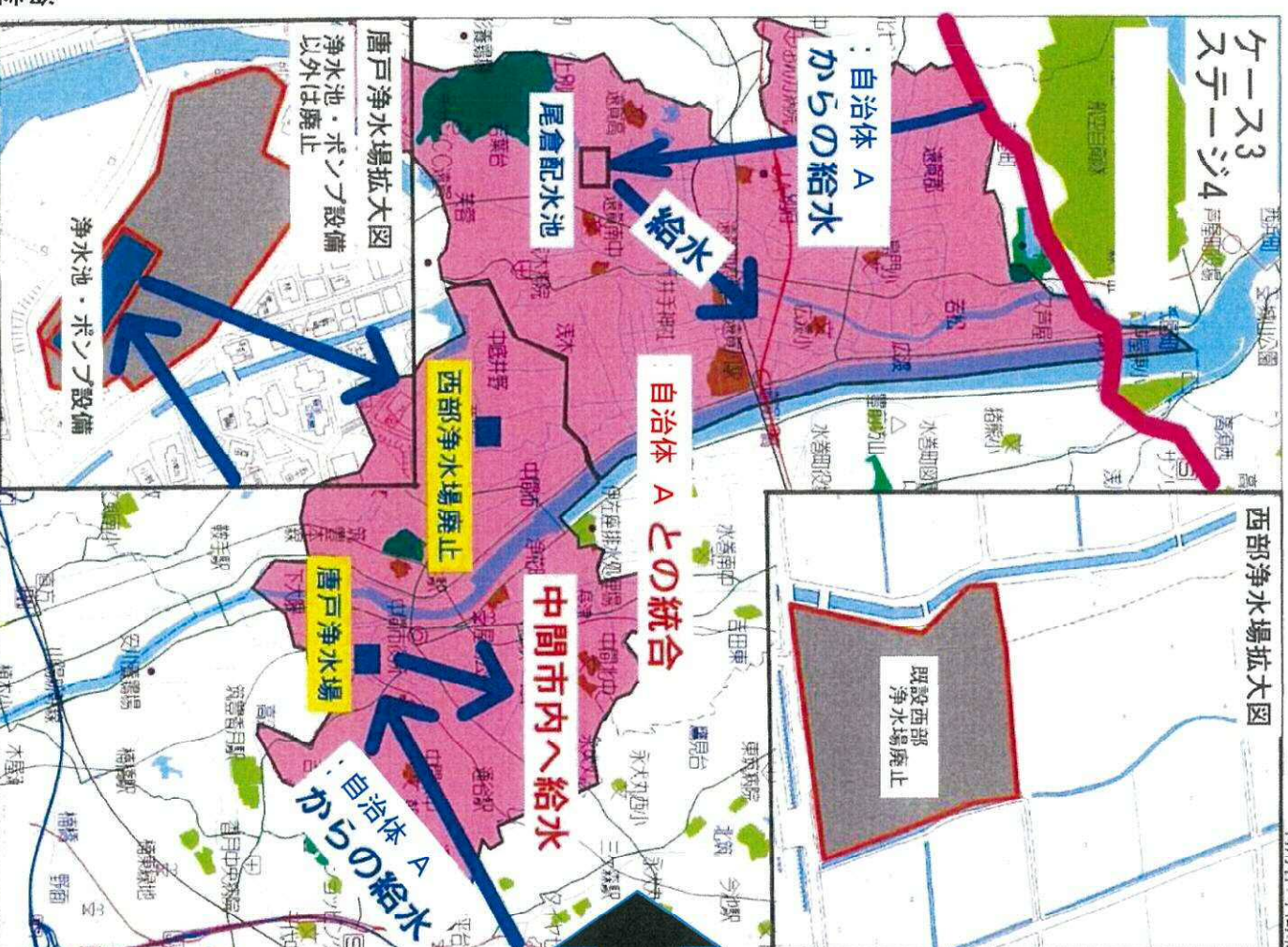
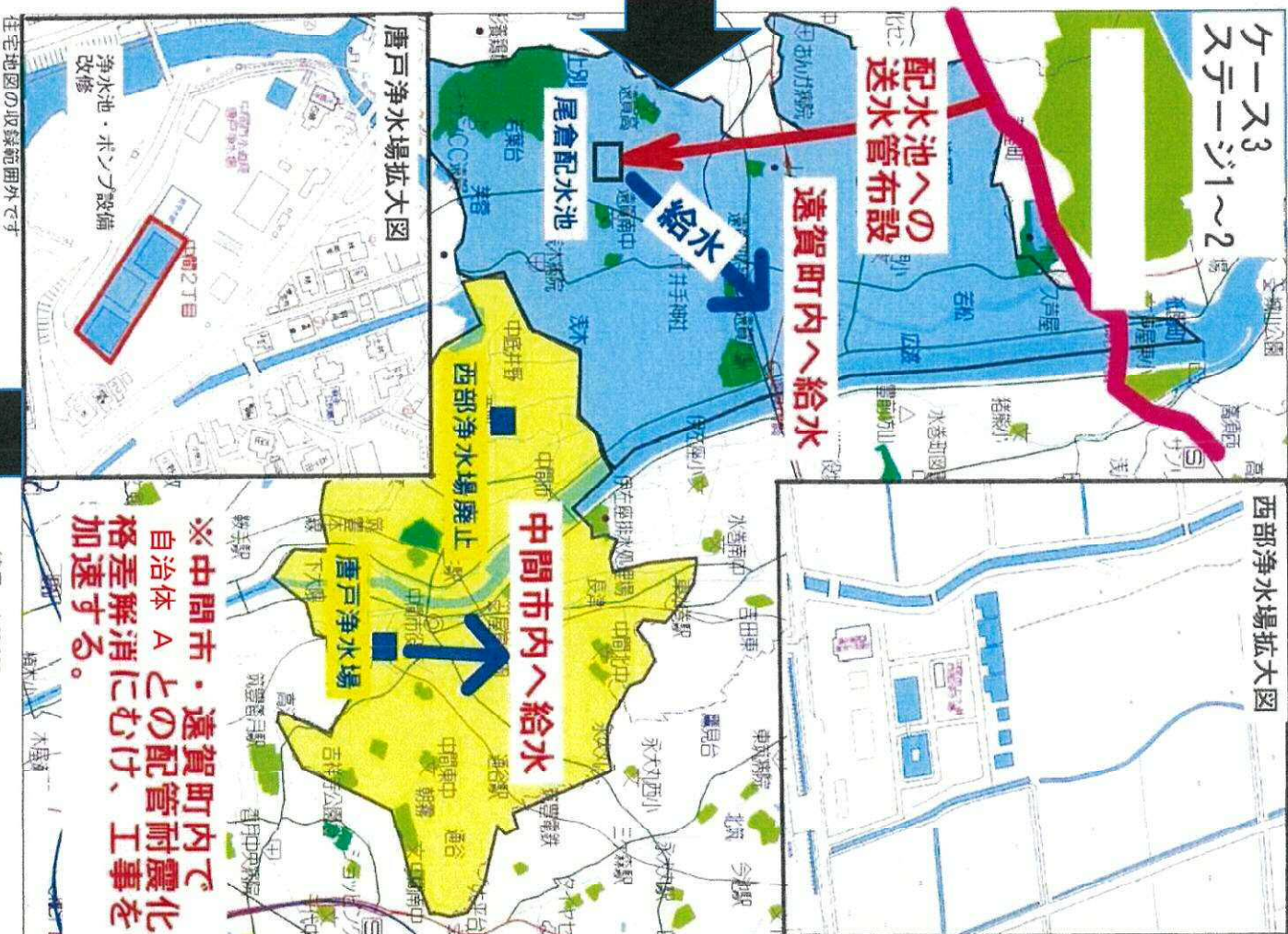
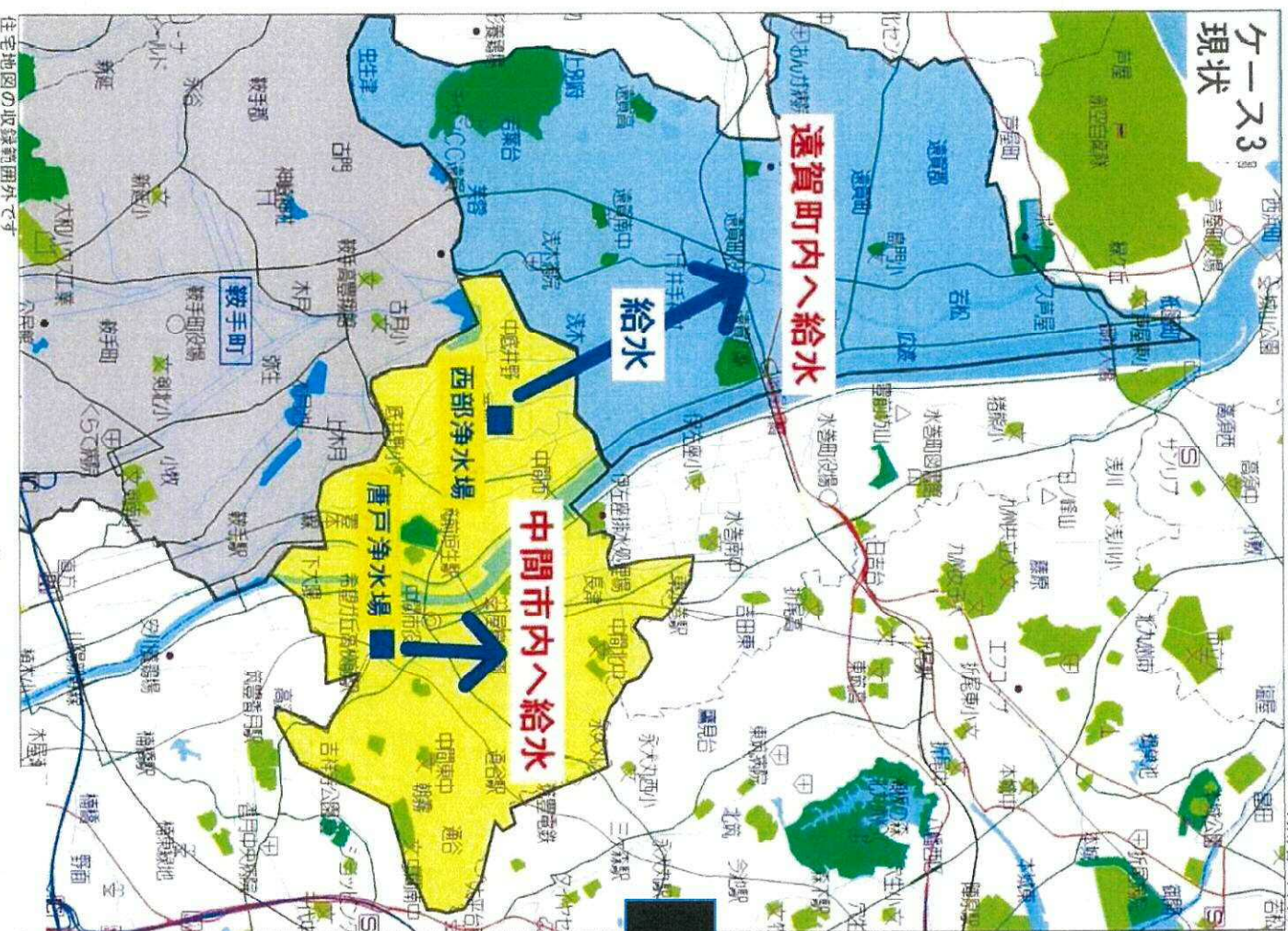


Case. 3

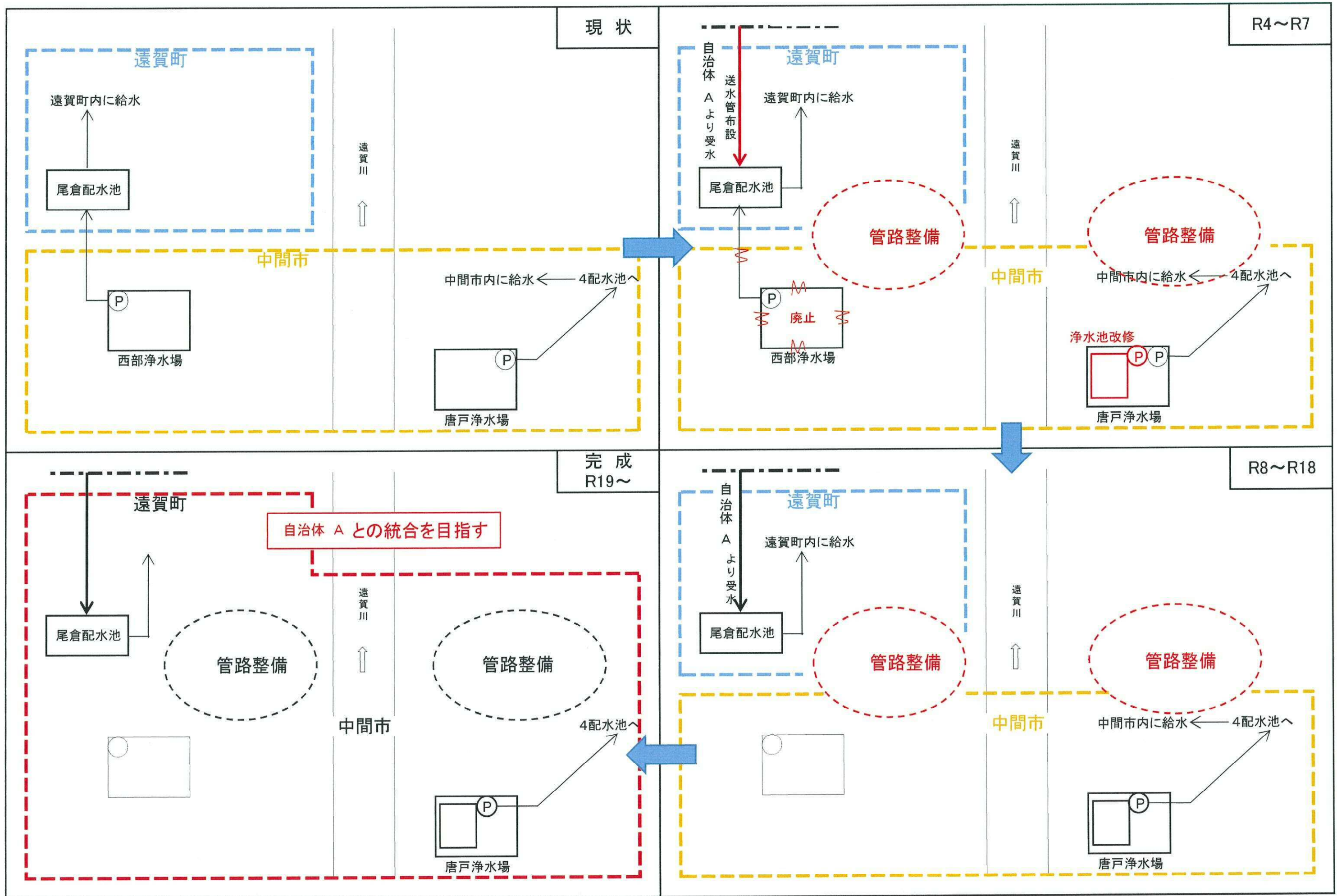


凡 例	
	浄水場
	配水池
	導水管 (φ250~φ400 /φ)
	送水管 (φ250~φ500 /φ)

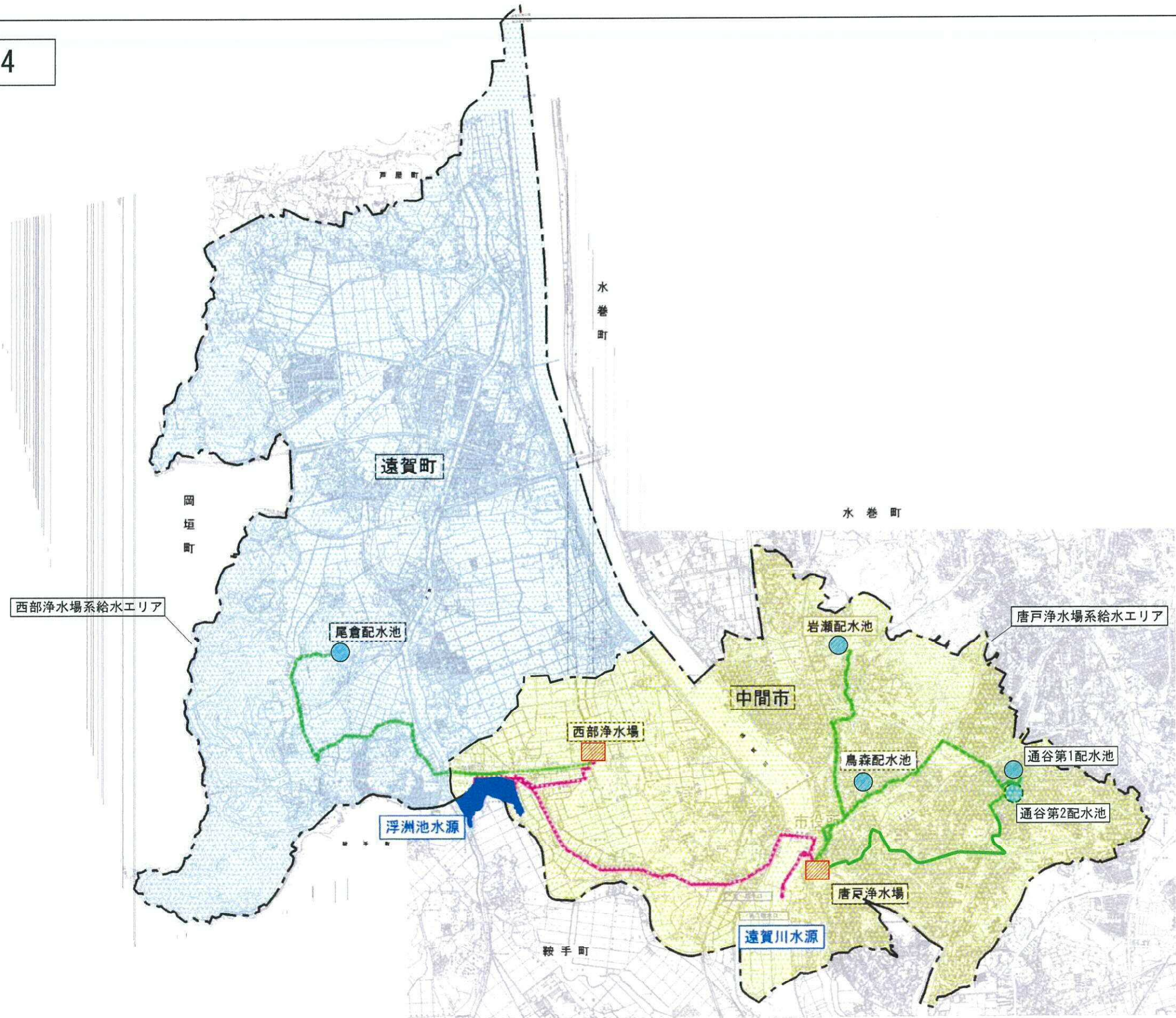








※中間市・遠賀町内で自治体 A との配管耐震化を加速する。



Case. 4



凡 例	
	浄水場
	配水池
	導水管 (φ250~φ400 /-)
	送水管 (φ250~φ500 /-)

